

# All-new TUCSON





# Revolutionizing the evolution of design.

Welcome to the revolution. The all-new Tucson is not simply an evolution of its predecessor, but a full-blown design revolution. And while leading the way in progressive design, it also offers state-of-the-art smart tech like best-in-class safety features, advanced driver-assistance systems and the most electrified powertrain line-up in its segment.





## A new look for a new age.

Sophisticated and progressive, the all-new Tucson's design is revolutionary. Dynamic geometric forms, sharp angles and the world's-first Parametric Hidden Lights combine to make it a powerfully unique presence on the road. Thanks to state-of-the-art half-mirror lighting technology, the Parametric Hidden Lights are hidden when turned off, and when switched on: the outer sections on the side of the grille transform into brilliant wing-like shapes, creating a unique high-tech lighting signature. When stopped, they blend in with the grille again.





## Bringing Sensuous Sportiness to the SUV world.

Taking modern aesthetics to the next level, the all-new Tucson's chiselled surfaces and dynamic lines put it at the cutting-edge of SUV design. Featuring a bigger and wider body, it is the first Hyundai SUV to be developed according to our new Sensuous Sportiness design identity. Its muscular stance combines sharp angles and dynamic proportions with rich surfaces – creating a progressive look without compromising on Tucson's rugged SUV heritage. And you can personalize its look with a choice of 9 dynamic colours.









## Wide open spaces for your digital journey.

Inside, you'll discover a feeling of openness and comfort that exceeds all expectations. Here, space, technology and information intersect harmoniously, setting new standards in the segment with its impressive range of advanced smart tech. The open-style 10.25" digital cluster is a major design innovation, enhancing the cockpit's high-tech flair together with the new 10.25" touchscreen, which flows seamlessly into the full touch console. The flowing lines of the dashboard blend seamlessly with the doors, wrapping around front occupants like a wide, open gorge. All navigation, infotainment and air-conditioning controls are now touch-activated for a sleek, seamless look that emphasizes the stylish, open ambience of the interior.



# Get into a new level of roominess.

Now longer and wider thanks to its new platform, the spacious interior is not just better – but bigger now too. Experience a roomy, wide-open interior space that delivers a level of comfort that is usually hard to find in cars in this segment. Its second-row cabin space is among the largest in its class. More spacious than ever before, the all-new Tucson gives you more passenger space to keep everybody comfortable – no matter where the road takes you.





## Flexibility for all of life's adventures.

Life is a journey. And getting there can be half the fun – especially in an SUV as roomy and versatile as the all-new Tucson. So whether it's a solo adventure or a weekend get away with the family, you'll enjoy exceptional versatility with clever features like remote folding levers that let you fold the seats down from the boot for 1,799 litres of flat cargo space. For improved convenience and versatility, the rear seats can now be folded in a 40:20:40 ratio, which is great for hauling bulky objects or sports equipment. And boot capacity has been increased as well, offering up to 503 litres overall for luggage with the seats up, depending on the trim and powertrain selected.









## Your digital journey starts here.

Naturally, the all-new Tucson has also been upgraded with the latest smart tech to make every journey safer and more convenient. Before embarking on your journey, you can check your calendar using the 10.25" touch screen to reconfirm your meeting and lay your phone into the high-speed wireless charging dock. And thanks to Apple CarPlay™ and Android Auto™, you can plug in your smartphone to project your favourite apps and phone functions right up on the big 10.25" screen. The 8" Display Audio system features Wireless Apple CarPlay™ and Android Auto™ so you can mirror your smartphone without even having to plug it in. You can then use voice control commands to take calls, send and receive messages, and listen to music on the premium sound system from BOSE.



Wireless charging dock.



That wireless connection for Apple Car Play and Android Auto depends on the phone type and software version.

يعتمد هذا الاتصال اللاسلكي لتشغيل Android Auto و Apple Car Play على نوع الهاتف وإصدار البرنامج.



# Highly efficient shifting – any way you like.

Depending on the powertrain, You switch between drive, neutral, reverse and park by simply using the buttons conveniently located in the centre console. Shift-by-wire is also available as an option on the 7-speed dual clutch transmission.



Button-type shift-by-wire.



# Selectable drive modes.

Switch drive modes to suit conditions – and your mood! You can instantly adjust the driving dynamics and feel of your all-new Tucson – at the push of a button. The colour schemes of the fully digital 10.25" open cluster change depending on which drive mode is selected. Select Sport mode for enhanced performance with modified throttle response, shift points and steering effort. Eco mode delivers peak fuel efficiency with modified acceleration, shift points and air conditioning performance. Select Normal mode for regular performance with good efficiency. If you choose the Hybrid powertrain, Eco and Sport drive modes are available. When equipped with the optional Electronic Controlled Suspension, the drive mode also influences the damping force on each individual wheel to enhance ride and handling.

\*The images shown are based on pre-production models. Certain visual features of the dashboard display may differ in the final production models. All figures appearing in these images are for illustrative purposes only, and are not meant to provide information on the vehicle's performance.



Normal mode.\*



Eco / Sport mode and Cube user interface.\*





**THE ALL NEW TUCSON.**  
Step in. Stand out.





**Surround View Monitor (SVM)**  
Enjoy 360° visibility for easier and safer parking. Four high definition cameras mounted on the front, sides, and rear of the vehicle show the surroundings in real time.





# Express yourself.

With three vibrant new colours available: Shimmering Silver, Amazon Grey and Teal, you can now choose from nine exterior colours. On top of that, the option of a two-tone roof in either Phantom Black or Dark Knight gives you even more possibilities to personalize your all-new Tucson to fit your individual style.



Phantom Black (PAE)



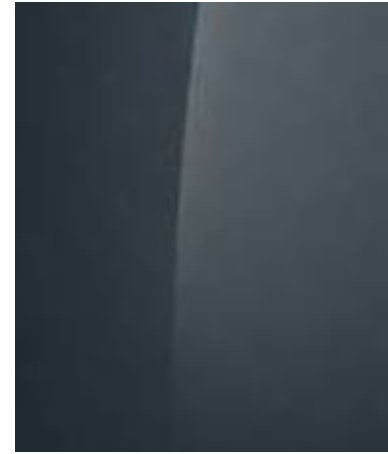
Polar White (PYW)



Shimmering Silver (R2T)



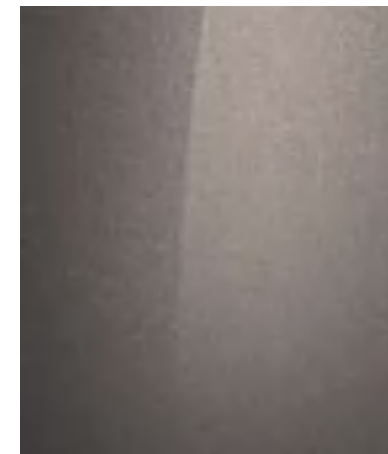
Dark Knight (YG7)



Teal (TG8)



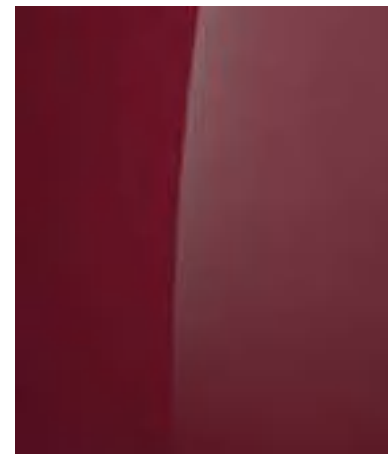
Amazon Grey (A5G)



Silky Bronze (B6S)



Engine Red (JHR)

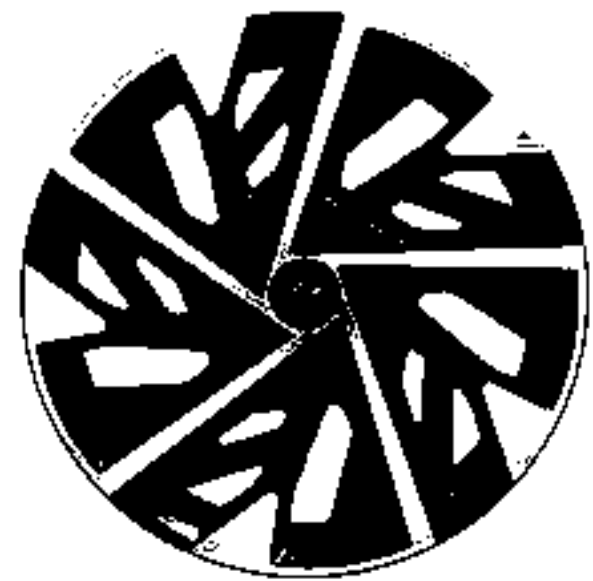


Sunset Red (WR6)

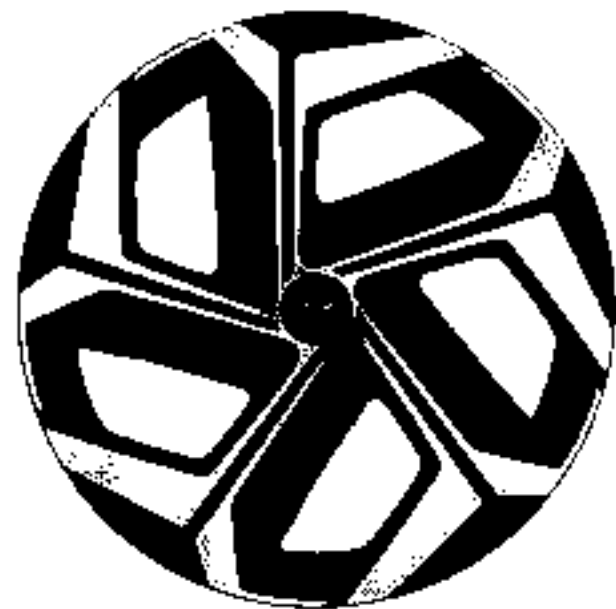




# Wheels



18" Alloy Wheel



19" Alloy Wheel

## Specifications



Overall Width 1,865



Overall Height 1,650



Wheel Base 2,680  
Overall Length 4,500

Dimensions		الأبعاد
Length (mm)	4,500	الطول الكلي (مم)
Width (mm)	1,865	العرض الكلي (مم)
Height (Roof Rack) (mm)	1,650	الارتفاع الكلي (مم)
Wheelbase (mm)	2,680	قاعدة العجلات (مم)
Curb Weight (kg)	1,469	وزن السيارة فارغة (كجم)
Weight G.V.W (kg)	2,030	الوزن الكلي (كجم)
Ground Clearance (mm)	170	ارتفاع المركبة عن الارض (مم)
Tank Capacity (L)	54	سعة خزان الوقود (لتر)
Cargo Volume (L) - VDA	503	السعة التخزينية لصندوق الامتعة (لتر)

Suspension		
Front Suspension Type	Macpherson Strut / Strut (Gas)	انظام التعليق الامامي
Rear Suspension Type	Multi-Link / Shock Absorber (Gas)	نظام التعليق الخلفي
Min. Turing Radius (m)	5.5 ±0.2	الحد الأدنى لنصف قطر الدوران (م)
Steering Type	MDPS (Motor Driven Power Steering)	نظام التوجيه

Powertrain		
Engine Capacity (L)	Smart Stream 1.6 Turbo GDI	السعة اللترية (لتر)
Power (HP/ RPM)	180 /5,500	اقصى قوة حصانیه (HP/ RPM)
Torque (NM/ RPM)	265 /1,500~4,500	اقصى عزم (NM/ RPM)
Transmission	7-Speed DCT	ناقل الحركة

Safety						مواصفات الأمان
	SMART	SMART PLUS	MODERN	ADVANCED	PREMIUM	
ABS (Antilock Braking System)	S	S	S	S	S	مكابح مضادة للانغلاق
EBD (Electronic Brake Distribution)	S	S	S	S	S	توزيع قوة المكابح إلكترونياً
ESP (Electronic Stability Program)	S	S	S	S	S	نظام الاتزان الالكتروني
HAC (Hill Assist Control)	S	S	S	S	S	برنامج التوازن عند المرتفعات
DBC (Downhill Brake Control)	S	S	S	S	S	برنامج التوازن عند المنحدرات
TSA (Trailer Stability Assist)	S	S	S	S	S	نظام المساعدة في ثبات المقطورة
EPB (Electronic Parking Brake)	S	S	S	S	S	مكابح يد الكترونية
Auto Hold Function	S	S	S	S	S	تعليق تلقائي لمكابح اليد الالكترونية
6 Airbags (Driver, Passenger, Side and Curtain)	S	S	S	S	S	6 وسائد هوائية (أمامية، جانبية و ستائرية)
Low Washer Fluid Warning	S	S	S	S	S	تحذير انخفاض سائل تنظيف الزجاج
Rear Fog Lamp	S	S	S	S	S	مصابيح ضباب خلفية
Rear Parking Sensors	S	S	S	S	S	جهاز تحذير المسافة الخلفية
Front Parking Sensors	-	-	S	S	S	جهاز تحذير المسافة الأمامية
TPMS (Tire Pressure Monitoring System)	-	-	S	S	S	نظام مراقبة ضغط الإطارات
ECM (Electrochromic Rear-view Mirror)	-	-	S	S	S	مرآة داخلية ذاتية التعتيم
Rear View Camera (Dynamic Parking Guidance)	-	S	S	S	S	كاميرا للرؤية الخلفية
*360 Surround View Monitor	-	-	-	-	S	رؤية 360° لمحيط السيارة

(-) Not Available (S) Standard



	SMART	SMART PLUS	MODERN	ADVANCED	PREMIUM	
<b>Hyundai Smart Sense Package**</b>						<b>أنظمة هيونداي الحديثة للسلامة**</b>
(FCW) Front Collision Warning	-	-	-	-	S	تحديد وتحذير من الاصطدام من الامام
(LDWS) Lane Departure Warning System	-	-	-	-	S	تحذير عند الخروج من المسار
(LFA) Lane Following Assist	-	-	-	-	S	المحافظة على القيادة في المسار
(BCW) Blind Collision Warning	-	-	-	-	S	نظام تحذير النقطة العمياء
(BSVM) Blind Spot View Monitor	-	-	-	-	S	رؤية النقطة العمياء في الشاشة الامامية
(SEW) Safe Exit Warning	-	-	-	-	S	تحذير عند الخروج من السيارة
(RCTA) Rear Cross Traffic Alert	-	-	-	-	S	تحذير عن رجوع السيارة من الاجسام المتحركة
<b>Exterior</b>						<b>التجهيزات الخارجية</b>
17" Alloy Wheels (215/ 65)	S	S	-	-	-	جنوط سبور مقاس 17" (65/215)
18" Alloy Wheels (235/ 55)	-	-	S	-	-	جنوط سبور مقاس 18" (55/235)
19" Alloy Wheels (235/ 50)	-	-	-	S	S	جنوط سبور مقاس 19" (50/235)
Full Size Alloy Spare Wheel	S	S	S	S	S	اطار طوارئ كامل الحجم
Roof Racks	S	S	S	S	S	حامل سقف
Rear Spoiler With High Mounted Stop Lamp LED	S	S	S	S	S	سبويلر خلفي بإضاءة مرتفعة للفرامل LED
Electrically Adjustable and Folding Outside Mirrors	S	S	S	S	S	مرايات كهربائية الطي وال ضبط
Sport Dark Chrome Front Grill	-	-	S	S	S	شبكة أمامية رياضية كروم غامق
Chrome Molding Bumper	-	-	S	S	S	حليات كروم بالاكصام
Doors Frame Satin Molding	-	-	S	S	S	حزام كروم ستان خارجي للأبواب
<b>Lighting Package</b>						<b>تجهيزات الإضاءة</b>
DRL (Daytime Running Lights - LED)	S	S	S	S	S	إضاءة أمامية خلال النهار LED
Positioning LED Lamps	S	S	S	S	S	إضاءة ارشادية LED
Outside Mirrors (LED) Repeater	S	S	S	S	S	إشارات جانبية بالمرايات LED
Bi-Functional Halogen Headlamps	S	S	-	-	-	مصابيح أمامية مسلطة للإضاءة الهالوجين
LED MFR Headlamps (Static Bending)	-	-	S	S	S	مصابيح أمامية بإضاءة LED
Rear (LED) Taillights	-	-	S	S	S	فوانيس LED خلفية (H-TYPE)
Inside Cabin Ambient Lighting (64-Colors)	-	-	-	S	S	إضاءة داخلية امبيانت (64 لون)
<b>Interior</b>						<b>التجهيزات الداخلية</b>
Hyundai's New Leather Steering Wheel (4-Spoke)	-	S	S	S	S	عجلة قيادة مكسوة بالجلد
Front Seats Back Pocket	S	S	S	S	S	جيوب خلفية للمقاعد الامامية
Center Armrest with Storage Box	S	S	S	S	S	مسند يد أمامي مع صندوق تخزين
Tilt & Telescopic Steering Wheel	S	S	S	S	S	عجلة قيادة قابلة للإمالة والامتداد
Automatic A/C Dual Zone	-	S	S	S	S	تكييف هواء أتوماتيك يتحكم ثنائي في درجات الحرارة
Rear Air Vents	S	S	S	S	S	فتحات تهوية خلفية للتكييف

(-) Not Available (S) Standard

For more information about the smart safety options, please refer to the owner manual

غير متاح (-) أساسي (S)

لمزيد من المعلومات حول خيارات الأمان الذكية، يرجى الرجوع إلى دليل المالك

	SMART	SMART PLUS	MODERN	ADVANCED	PREMIUM	
<b>Interior</b>						<b>التجهيزات الداخلية</b>
Cloth Seats Covering	S	S	S	-	-	فرش قماش للمقاعد الداخلية
Leather Seats Covering	-	-	-	S	S	فرش جلد للمقاعد الداخلية
Deluxe Doors Scuff	-	-	S	S	S	أعتاب داخلية كروم
Overhead Center Console (LED)	-	-	S	S	S	وحدة التحكم العلوية بإضاءة (LED)
Front Windows (Auto Up/ Down)	S	S	S	-	-	النوافذ الامامية (Auto Up / Down)
All Windows (Auto Up/ Down) - Glossy Switches	-	-	-	S	S	جميع النوافذ (Auto Up / Down) . مفاتيح لامعة
Remote Folding Rear Seats	-	-	-	S	S	مقاعد خلفية قابلة للطي من الشنطة
Doors TPO/ Cloth Trim with Stitches	-	-	-	S	S	تنجيد فاخر للابواب
Powered Driver Seat with Lumbar Support	-	-	-	S	S	تعديل كرسي السائق كهربائياً
Passenger Power Seat	-	-	-	-	S	تحكم كهربائي في كرسي الراكب الامامي
Front Ventilated Seats	-	-	-	-	S	تبريد للمقاعد الامامية
<b>Convenience</b>						<b>وسائل الراحة</b>
Cruise Control & Speed Limiter Assist	S	S	S	S	S	مثبت و محدد سرعة
Terrain Mode Select	S	S	S	S	S	اختيار نمط القيادة حسب نوعية الطرق
Auto Light Sensor	S	S	S	S	S	حساس اضاءة أتوماتيك
Smart Key (Start/ Stop Button)	S	S	S	S	S	مفتاح ذكي
Remote Engine Starter	S	S	S	S	S	امكانية ادارة المحرك عن بعد
Rear Folding Seats (40:20:40)	S	S	S	S	S	امكانية طي المقاعد الخلفية 40:20:40
USB Charging Ports (2 Port)	S	S	S	S	S	شاحن USB
12V Sockets	S	S	S	S	S	مخرج كهرباء 12 فولت
Privacy Glass	S	S	S	S	S	زجاج خلفي داكن اللون
10.25" TFT-LCD Cluster Screen	-	S	S	S	S	شاشة 10.25 بوصة للعدادات
SBW (Shift-By-Wire) Transmission Control	-	S	S	S	S	ناقل الحركة الكتروني
Paddle Shifters	-	S	S	S	S	التحكم في ناقل الحركة من المقود
Wireless Cellphone Charger	-	S	S	S	S	شاحن هوائي للهاتف الجوال
Panoramic Sunroof	-	-	S	S	S	فتحة سقف بانوراما كهربائية
Solar Glass	-	-	-	S	S	زجاج حراري
Smart Power Tailgate	-	-	-	-	S	فتح صندوق الامتعة كهربائياً
<b>Entertainment</b>						<b>أنظمة الترفيه</b>
8" Infotainment Screen	S	S	S	-	-	شاشة 8 بوصة للمعلومات والترفيه
10.25" Infotainment Screen	-	-	-	S	S	شاشة 10.25 بوصة للمعلومات والترفيه
Apple CarPlay/ Android Auto Support	S	S	S	S	S	دعم برامج Apple CarPlay / Android Auto
USB Connection Port	S	S	S	S	S	مدخل USB
Multi-Function Steering Wheel	S	S	S	S	S	عجلة قيادة متعددة المهام
Bluetooth® Connectivity	S	S	S	S	S	نظام Bluetooth® للهاتف
Voice Recognition	S	S	S	S	S	نظام التعرف على الصوت
6 Speakers	S	S	S	-	-	6 سماعات
BOSE® Premium Sound System 7 Speakers + Subwoofer	-	-	-	S	S	نظام الصوت BOSE مكبر صوت + 7 سماعات
Navigation System	-	-	-	S	S	خرائط ونظام ملاحة

(-) Not Available (S) Standard

\*\*Hyundai Smart Sense Package depends on driving speed, road conditions and surrounding environment

The company reserves the right to make any modification to the available specifications and colors anytime without prior notification.

Warranty 5 years or 100,000 km, whichever comes first.

Terms and conditions of the warranty booklet apply.

غير متاح (-) أساسي (S)

\*\*أنظمة هيونداي الحديثة للسلامة تعتمد على سرعة المركبة، ظروف الطريق والبيئة المحيطة

تحتفظ الشركة بالحق في إجراء أية تعديلات من وقت لآخر علي المواصفات والألوان المتوفرة

ضمان 5 سنين أو 100,000 كيلومتر أيهما أقرب

تطبق شروط وأحكام كتب الضمان





# Feel it to believe it.

Sophisticated and progressive, the all-new Tucson rejects the ordinary – pushing the boundaries of the segment to reinvent just about everything. Outside, its chiselled surfaces and dynamic lines are designed to impress while inside, you'll discover a level of roominess, comfort and versatility that exceeds all expectations. Stop by your local Hyundai dealer and experience it for yourself. Because you have to feel it to believe it.



**Taking modern  
aesthetics to the  
next level.**





**Scan me**



Hotline 16661, [hyundai-egypt.net](http://hyundai-egypt.net)  
Published on Jan 2021  
Version 1